

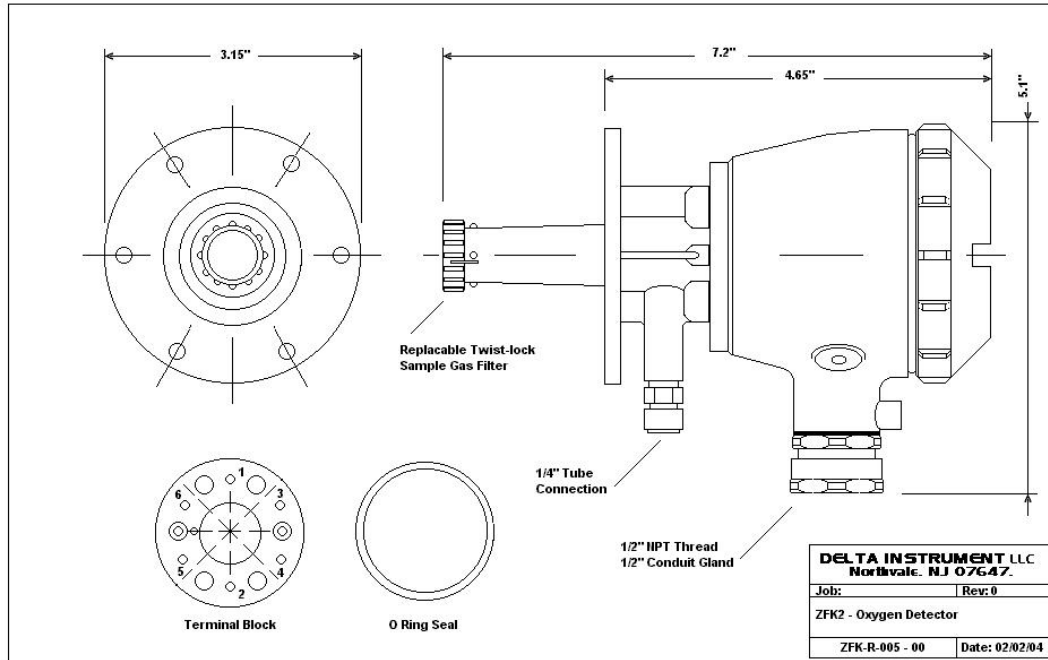


Tools Required

#2 Phillips screw driver
Small pair of side cutters
Soldering iron + solder

Parts Required

1 - Replacement Detector Element
1 - Sample Gas Filter (not supplied with element)



Determine that Oxygen Detector is defective and clean unit if necessary.

Remove cap from Detector.

Cut the six wires below the terminal block.

Remove the Terminal Block mounting screws located at 3 and 9 o'clock and unsolder the six old wires from the terminal posts

Remove the four remaining detector element mounting screws to separate the conduit body from The Element.

Install the new element and "O" ring, ensuring that the orientation is correct.

Install Terminal Block and solder the six wires.

Remove the extra wire projecting from the Terminal Block flush with the solder lugs and ensure the new solder connections are bright and well made.

Check Heater Terminals 1 and 2 with an ohm meter, 50 to 55 Ω for 115V
200 to 250 Ω for 220V

Thermocouple terminals 3 and 4, 2~3 Ω

Terminals 5 and 6 are for the sensor - do not ohm check.

Finally check all Terminals are open to ground.

Exchange or replace sample gas filter as necessary.