

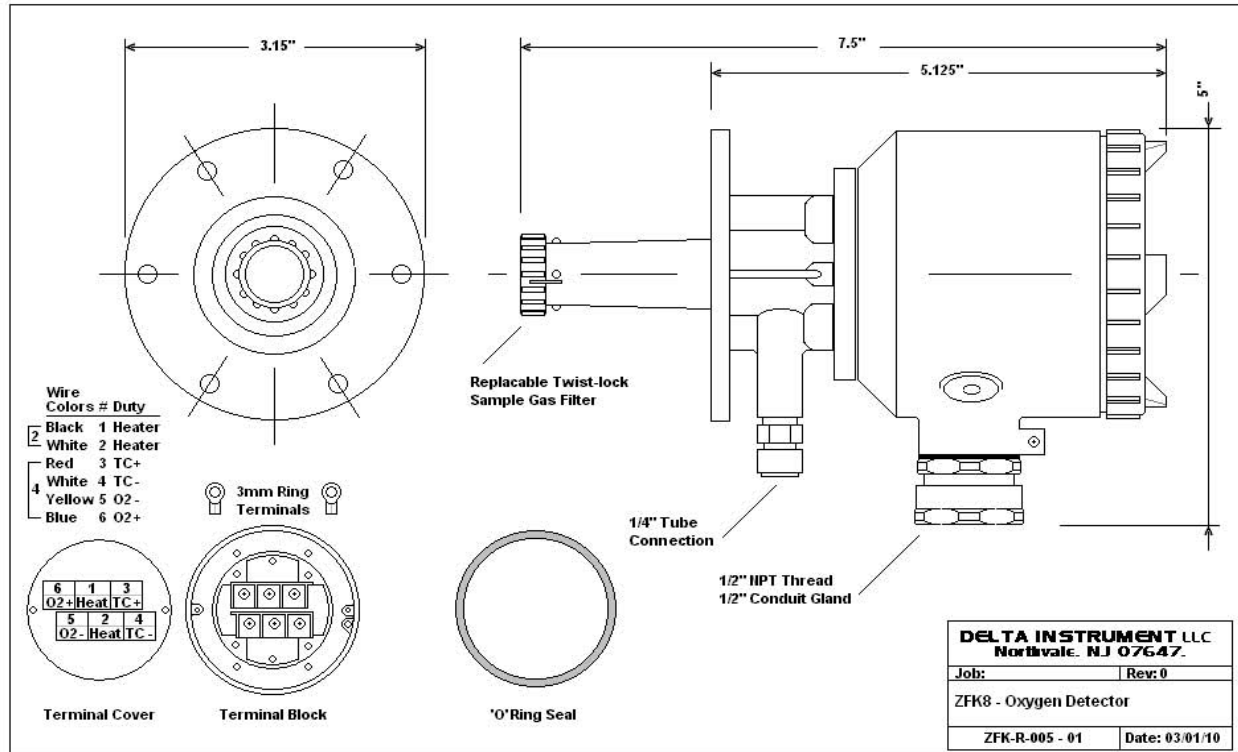


## Tools Required

#2 Phillips screw driver  
Small pair of side cutters  
Crimping tool

## Parts Required

6 - 3mm Ring Terminals



Turn off line power and remove ZFK2 Detector – first allowing it to cool before handling. Remove cover, the 6 terminal screws and both the 2 & 4 conductor cables. Cut the 4mm lugs from the connecting cable and crimp the new 3mm ring terminals to the 6 color coded wires, reusing the existing numbered wire markers or replacing them. Using the diagram, wire ZFK8 and then replace the terminal cover using the two 3mm screws. Install the ZFK8 Detector to the probe flange using six 5mm bolts ensuring that the new “O” ring seal is correctly seated. Install the calibration gas connection and replace the threaded weatherproof cover. Check all connecting cable and tubing connections before applying line power. Perform Zero and span calibration following procedures outlined in user’s manual.